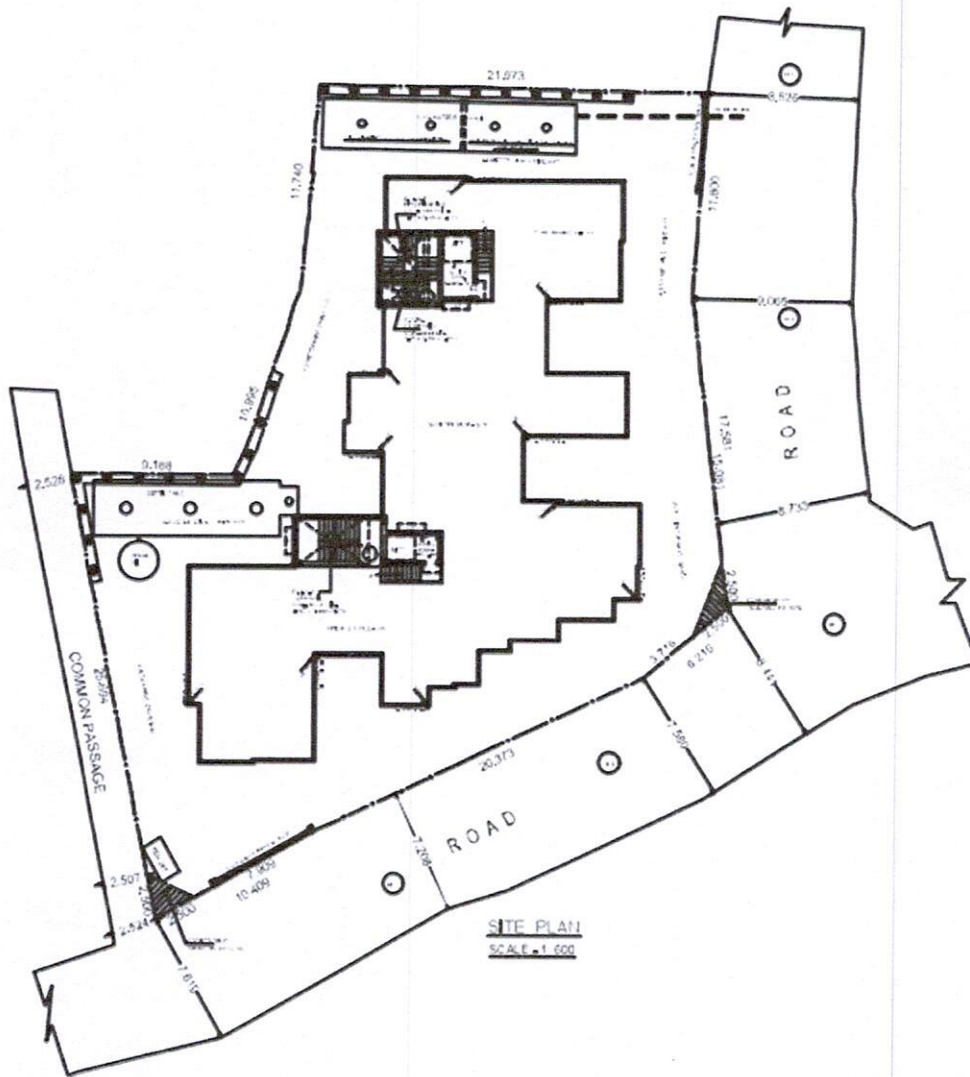


PROJECT LOCATION MAP

Project Name- "THE EDGE" lying and situated at being Municipal Holding No. 121, S.N. Ghosh Avenue, Post Office- Narendrapur, Police Station- Sonarpur, Kolkata-700103, under the local limit of Ward No. 26 of Rajpur Sonarpur Municipality, with the Jurisdiction of Additional District Sub Registrar at Sonarpur, District- South 24 Parganas, in the state of West Bengal.



LATITUDE	LONGITUDE
22°43'24"N	88°39'51"E

TRUSTWORTHY NIRMAN LLP

Pankaj Poddar
Designated Partner